



ASCO/JOUCOMATIC s.r.o.

Ovčí hájek 2175/5
Praha 5 - Nové Butovice, 158 00
tel.: 235 090 061 - 5
fax: 235 090 060
e-mail: general.ascocz@emerson.com
www.ventil.cz
www.asconumatics.eu
www.numatics.de

*Gripping tightly -
easy to unfasten*

NP Fittings

The new NP Push-In Fittings -
made from plastic reinforced brass

Oval Sleeve
Space saving
Easily to unlock
For Tubes
4 / 6 / 8 / 10 / 12 mm OD
G Threads M5 to 1/2"
with O-ring.
Threads to ISO 228
25 Types
Vacuum to 10 bar



G Threads from
Nickel plated Brass
Stainless Steel Clamping Ring
Tube easily to be plugged in.
Lip Ring Seal
High Holding Force
Non destructive Detaching
of the Tube
All threaded Fittings are
swiveling



Accessories

Push-In Fittings - Plastic, Brass reinforced

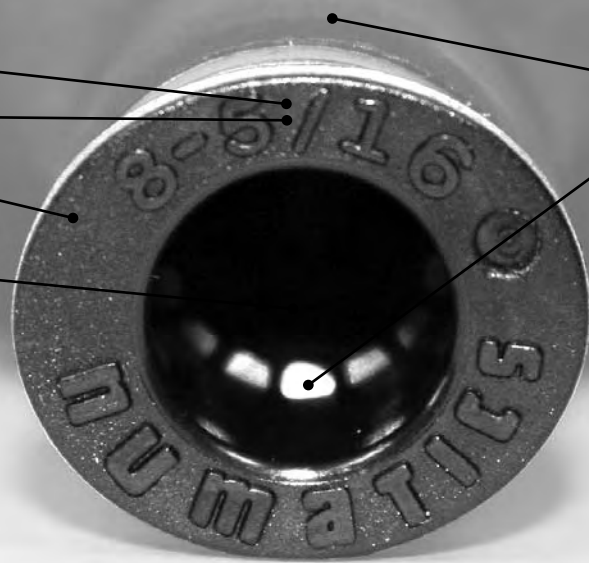
NP100 Series: Push-In Fittings made of Plastic, Brass reinforced, for pneumatic use

- Body: Plastic. Threads from nickel-plated brass HPb59-1
- For externally calibrated tubes: 4, 6, 8, 10, 12 mm OD, according to CETOP RP54P, NFE49-100/001
- for tubes made from: PA (Nylon), PU (Polyurethane)
- Temperature ranges: -20 to 60°C
- Fluids: Compressed air

NB100 Series: The Alternative in nickel-plated brass

Technical data like NP100 but body completely made from HPb59-1. Types 101, 102 and 105 available.

Oval Sleeve
Space saving
Easily to unlock
For Tubes
4 / 6 / 8 / 10 / 12 mm OD
G Threads M5 to 1/2"
with NBR O-ring.
Threads to ISO 228



G Threads from
Nickel plated Brass
Stainless Steel Clamping Ring
Tube easily to be plugged in.
NBR Lip Ring Seal
High Holding Force
Non destructive Detaching
of the Tube
All threaded Fittings are
swiveling

25 Types

Vacuum to 10 bar

How to Order:
(example)

N

P

102

006

001

Series	Material	Thread Size	Tube Size	Thread Size
N = Metric	P = Plastic, Brass reinforced	100 = Union resp. Reducer, Straight	004 = 4 mm	000 = 1/8"
	B = Brass, Nickel-Plated (Types 101, 102, 105)	101 = Bulkhead Union Straight	006 = 6 mm	001 = 1/4"
		102 = Straight Push-In	008 = 8 mm	002 = 3/8"
		106 = Union Elbow 90°	010 = 10 mm	003 = 1/2"
		108 = Swivel Elbow 90°	012 = 12 mm	005 = M5
		108E = Swivel Elbow 90°, long		
		110 = Union Tee		
		113 = Swivel Branch Tee		
		115 = Swivel Run Tee		
		117 = Union Cross		
		118 = Plug		
		121 = Reducer Straight		
		127 = Swivel Elbow 45°		
		128 = Bulkhead Union 90°		
		129 = Socket Elbow 45°		
		130 = Socket Elbow 90°		
		131 = Y Union		
		131 = Y Reducer	139C = Non-Return Flow Control Union	
		132 = Swivel Branch Y	140 = Union Hand Valve, non-reliev.	
		136C = Swivel Non-return Exhaust Control	148 = Socket Y	
		137 = Swivel Universal Elbow	193 = Union Triple	



Accessories

Push-In Fittings - Plastic, Brass reinforced

Order Code	B mm	Tube Ø mm	Union straight		NP100
NP100-004-000	33.0	4			
NP100-006-000	35.2	6			
NP100-008-000	39.1	8			
NP100-010-000	47.8	10			
NP100-012-000	49.2	12			

Order Code	B mm	Tube Ø D1 mm	Tube Ø D2 mm	Reducer straight		NP100
NP100-006-004	33.0	6	4			
NP100-008-006	35.2	8	6			
NP100-010-008	39.1	10	8			
NP100-012-010	47.8	12	10			

Order Code	B mm	E mm	H mm	M	Tube Ø mm	Bulkhead Union, straight, Nickel-plated Brass		NB101
NB101-004-000	30.1	9.7	14	M12	4			
NB101-006-000	31.8	7.5	17	M14	6			
NB101-008-000	35.3	6.8	19	M16	8			
NB101-010-000	41.6	11.5	24	M20	10			
NB101-012-000	45.3	12.8	27	M22	12			

Order Code	A mm	G/G mm	H mm	L mm	Tube Ø mm	Straight, G Thread, O-Ring		NP102
NP102-006-000	5.5	1/8"	12	25	6			
NP102-006-001	7.5	1/4"	14	24	6			
NP102-008-000	5.5	1/8"	14	26.6	8			
NP102-008-001	7.5	1/4"	14	25.6	8			
NP102-008-002	8.5	3/8"	17	23.8	8			
NP102-010-001	7.5	1/4"	17	33.3	10			
NP102-010-002	8.5	3/8"	17	29.8	10			
NP102-010-003	11.0	1/2"	21	30.8	10			
NP102-012-002	8.5	3/8"	21	30.6	12			
NP102-012-003	11.0	1/2"	21	33.6	12			

Order Code	A mm	B mm	G/G mm	H mm	L mm	Tube Ø mm	Straight, G Thread, O-Ring, Nickel-plated Brass		NB102
NB102-004-000	14.6	5.5	1/8"	14	19.5	4			
NB102-004-001	14.6	7.5	1/4"	17	18.1	4			
NB102-006-000	15.2	5.5	1/8"	14	20.4	6			
NB102-006-001	15.2	7.5	1/4"	17	22.1	6			
NB102-006-002	15.2	8.5	3/8"	20	20.7	6			
NB102-008-000	16.2	5.5	1/8"	14	25.1	8			
NB102-008-001	16.2	7.5	1/4"	17	23.5	8			
NB102-008-002	16.2	8.5	3/8"	20	21.1	8			
NB102-010-001	16.2	7.5	1/4"	17	29.3	10			
NB102-010-002	16.2	8.5	3/8"	20	26.8	10			
NB102-010-003	16.2	11.0	1/2"	24	25.1	10			
NB102-012-001	21.7	7.5	1/4"	21	32.6	12			
NB102-012-002	21.7	8.5	3/8"	21	29.6	12			
NB102-012-003	21.7	11.0	1/2"	24	30.6	12			


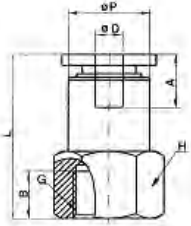
Subject to change without notice. Not liable for printing errors


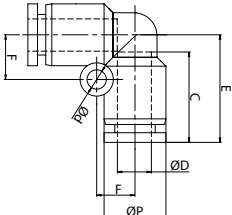
Accessories



Accessorieswww

Push-In Fittings - Plastic, Brass reinforced

NB105	Female straight, Nickel plated Brass	Tube Ø	A	B	extern. Thread	H	L	P Ø	Order Code
		mm	mm	mm	G-/G	mm	mm	mm	
		4	14.6	7.0	1/8"	14	23.5	10.0	NB105-004-000
		4	14.6	10.0	1/4"	17	26.5	10.0	NB105-004-001
		6	15.2	7.0	1/8"	14	24.4	12.0	NB105-006-000
		6	15.2	10.0	1/4"	17	27.4	12.0	NB105-006-001
		6	15.2	11.0	3/8"	21	28.4	12.0	NB105-006-002
		8	16.2	7.0	1/8"	14	25.1	14.0	NB105-008-000
		8	16.2	10.0	1/4"	17	28.1	14.0	NB105-008-001
		8	16.2	11.0	3/8"	21	29.1	14.0	NB105-008-002
		10	18.7	10.0	1/4"	17	30.5	17.0	NB105-010-001
		10	18.7	11.0	3/8"	21	31.5	17.0	NB105-010-002
		10	18.7	13.0	1/2"	24	33.5	17.0	NB105-010-003
		12	21.7	10.0	1/4"	21	33.6	20.0	NB105-012-001
		12	21.7	11.0	3/8"	21	34.6	20.0	NB105-012-002
		12	21.7	13.0	1/2"	24	36.6	20.0	NB105-012-003

NP106	Union Elbow 90°	Tube Ø	E	d Ø	Order Code
		mm	mm	mm	
		4	17.5	-	NP106-004-000
		6	19.0	3.2	NP106-006-000
		8	22.8	3.2	NP106-008-000
		10	27.6	4.2	NP106-010-000
		12	29.6	4.3	NP106-012-000



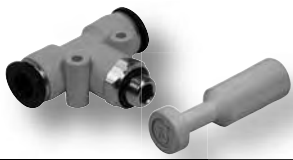
Push-In Fittings - Plastic, Brass reinforced

Order Code	A mm	B mm	G mm	H mm	L mm	Tube Ø mm	Swivel Elbow 90°	NP108
NP108-004-005	17.5	4.0	M5	10	17.0	4		
NP108-004-000	17.7	5.5	1/8"	14	24.5	4		
NP108-004-001	17.7	7.5	1/4"	17	27.0	4		
NP108-006-005	19.0	4.0	M5	12	17.5	6		
NP108-006-000	19.3	5.5	1/8"	14	25.7	6		
NP108-006-001	19.3	7.5	1/4"	17	28.2	6		
NP108-006-002	19.3	8.5	3/8"	20	29.7	6		
NP108-008-000	22.8	5.5	1/8"	14	29.0	8		
NP108-008-001	22.8	7.5	1/4"	17	31.5	8		
NP108-008-002	22.8	8.5	3/8"	20	33.0	8		
NP108-010-000	27.6	5.5	1/8"	17	33.8	10		
NP108-010-001	27.6	7.5	1/4"	17	35.8	10		
NP108-010-002	27.6	8.5	3/8"	20	37.3	10		
NP108-010-003	27.6	11.0	1/2"	24	41.3	10		
NP108-012-001	29.6	7.5	1/4"	21	38.0	12		
NP108-012-002	29.6	8.5	3/8"	21	39.0	12		
NP108-012-003	29.6	11.0	1/2"	24	43.0	12		

Order Code	A mm	B mm	E mm	H mm	G/G mm	Tube Ø mm	Swivel Elbow 90°, long	NP 108E
NP108E-004-000	7.5	36.0	17.5	10	1/8"	4		
NP108E-004-001	9.5	39.0	17.5	14	1/4"	4		
NP108E-006-000	7.5	39.7	19.0	12	1/8"	6		
NP108E-006-001	9.5	42.2	19.0	14	1/4"	6		
NP108E-006-002	10.5	43.7	19.0	17	3/8"	6		
NP108E-008-000	7.5	44.8	22.8	14	1/8"	8		
NP108E-008-001	9.5	46.8	22.8	14	1/4"	8		
NP108E-008-002	10.5	48.4	22.8	17	3/8"	8		
NP108E-010-000	7.5	54.3	29.9	17	1/8"	10		
NP108E-010-001	9.5	56.3	29.9	17	1/4"	10		
NP108E-010-002	10.5	57.3	29.9	17	3/8"	10		
NP108E-010-003	13.5	60.8	29.9	21	1/2"	10		
NP108E-012-001	9.5	61.5	29.6	21	1/4"	12		
NP108E-012-002	10.5	62.5	29.6	21	3/8"	12		
NP108E-012-003	13.5	65.5	29.6	21	1/2"	12		

Order Code	E mm	d Ø mm	Tube Ø mm	Union Tee	NP110
NP110-004-000	18.5	3.2	4		
NP110-006-000	19.3	3.2	6		
NP110-008-000	22.75	3.2	8		
NP110-010-000	28.3	4.2	10		
NP110-012-000	29.6	4.3	12		

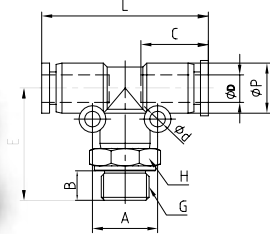
Subject to change without notice. Not liable for printing errors



Accessories

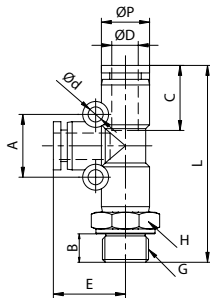
Push-In Fittings - Plastic, Brass reinforced

NP113 Swivel Branch Tee



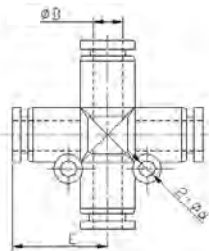
Tube Ø mm	A mm	B mm	C mm	G/G mm	H mm	L mm	Order Code
4	14	4.0	15.1	M5	10	37.4	NP113-004-005
4	14	5.5	15.1	1/8"	14	37.4	NP113-004-000
6	16	4.0	16.0	M5	12	39.2	NP113-006-005
6	16	5.5	16.0	1/8"	14	39.2	NP113-006-000
6	16	7.5	16.0	1/4"	17	39.2	NP113-006-001
8	18	5.5	18.1	1/8"	14	45.5	NP113-008-000
8	18	7.5	18.1	1/4"	17	45.5	NP113-008-001
8	18	8.5	18.1	3/8"	20	45.5	NP113-008-002
10	24	7.5	20.4	1/4"	17	56.3	NP113-010-001
10	24	8.5	20.4	3/8"	20	56.3	NP113-010-002
10	24	11.0	20.4	1/2"	24	56.3	NP113-010-003
12	27	7.5	23.2	1/4"	21	59.2	NP113-012-001
12	27	8.5	23.2	3/8"	21	59.2	NP113-012-002
12	27	11.0	23.2	1/2"	24	59.2	NP113-012-003

NP115 Swivel Run Tee



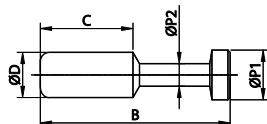
Tube Ø mm	A mm	B mm	C mm	G/G mm	H mm	L mm	Order Code
4	14.0	4.0	15.1	M5	10	41.5	NP115-004-005
4	14.0	5.5	15.1	1/8"	14	44.2	NP115-004-000
6	16.0	4.0	16.0	M5	12	43.3	NP115-006-005
6	16.0	5.5	16.0	1/8"	14	45.6	NP115-006-000
6	16.0	7.5	16.0	1/4"	17	48.1	NP115-006-001
8	18.0	5.5	18.1	1/8"	14	51.7	NP115-008-000
8	18.0	7.5	18.1	1/4"	17	54.2	NP115-008-001
8	18.0	8.5	18.1	3/8"	20	55.7	NP115-008-002
10	24.0	7.5	20.4	1/4"	17	64.8	NP115-010-001
10	24.0	8.5	20.4	3/8"	20	66.3	NP115-010-002
10	24.0	11.0	20.4	1/2"	24	70.3	NP115-010-003
12	27.0	7.5	23.2	1/4"	21	67.6	NP115-012-001
12	27.0	8.5	23.2	3/8"	21	68.6	NP115-012-002
12	27.0	11.0	23.2	1/2"	24	72.6	NP115-012-003

NP117 Union Cross



Tube Ø mm	E mm	d Ø mm	Order Code
4	17.5	3.2	NP117-004-000
6	19.3	3.2	NP117-006-000
8	22.75	3.2	NP117-008-000
10	28.3	4.2	NP117-010-000
12	29.6	4.3	NP117-012-000

NP118 Plug



D Ø mm	B mm	C mm	Order Code
4	28.0	15.0	NP118-004-000
6	33.0	17.0	NP118-006-000
8	37.0	18.0	NP118-008-000
10	42.0	20.5	NP118-010-000
12	44.0	23.0	NP118-012-000



Push-In Fittings - Plastic, Brass reinforced

Order Code	D1 Ø mm	B mm	C mm	D2 Ø mm
NP121-006-004	4	42,0	17,0	6
NP121-008-004	4	44,5	18,0	8
NP121-008-006	6	45,0	18,0	8
NP121-010-006	6	47,0	20,0	10
NP121-012-008	8	54,0	23,5	12
NP121-012-010	10	54,5	23,5	12

Reducer Straight

NP121

Order Code	B mm	H mm	L mm	G/G mm	Tube Ø mm
NP127-006-000	7.5	12	42.0	1/8"	6
NP127-006-001	9.5	14	44.5	1/4"	6
NP127-008-001	9.5	14	50.0	1/4"	8
NP127-010-001	9.5	17	55.6	1/4"	10
NP127-010-002	10.5	17	56.5	3/8"	10

Swivel Elbow 45°

NP127

Order Code	A mm	B mm	C mm	d Ø mm	H mm	L mm	M mm	Tube Ø mm
NP128-004-000	17.5	15.1	14.6	3.2	14	43.6	M12	4
NP128-006-000	19.0	16.0	15.2	3.2	17	46.5	M14	6
NP128-008-000	22.8	18.1	16.2	3.2	20	53.3	M16	8
NP128-010-000	27.6	20.4	18.7	4.2	24	63.9	M20	10
NP128-012-000	29.6	23.2	21.7	4.2	27	69.3	M22	12

Bulkhead Union 90°

NP128

Order Code	A mm	B mm	C mm	D Ø mm	L mm	P Ø mm	Tube Ø mm
NP129-004-000	22.7	15.1	16.4	11.0	47.5	4	4
NP129-006-000	24.4	16.0	18.0	13.0	52.5	6	6
NP129-008-000	27.6	18.1	20.9	14.8	61.0	8	8
NP129-010-000	30.2	20.4	23.5	18.4	70.1	10	10
NP129-012-000	33.2	23.2	26.3	21.0	77.9	12	12

Socket Elbow 45°

NP129

Order Code	A mm	B mm	L mm	d Ø mm	P Ø mm	Tube Ø mm
NP130-004-000	17.7	15.1	33.0	3.2	11.0	4
NP130-006-000	19.3	16.0	36.2	3.2	13.0	6
NP130-008-000	22.8	18.1	42.5	3.2	14.8	8
NP130-010-000	27.6	20.4	50.8	4.2	18.4	10
NP130-012-000	29.6	23.2	54.5	4.2	21.0	12

Socket Elbow 90°

NP130

Subject to change without notice. Not liable for printing errors

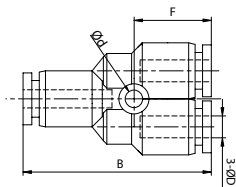
Accessories



Accessories

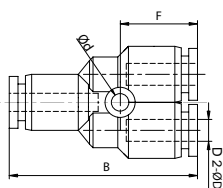
Push-In Fittings - Plastic, Brass reinforced

NP131 Y Union



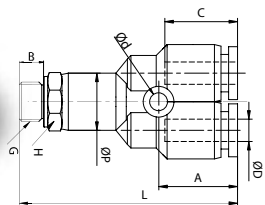
Tube Ø mm	B mm	d Ø mm	F mm	Order Code
4	35.5	3.2	14.0	NP131-004-000
6	37.1	3.2	14.8	NP131-006-000
8	40.4	3.2	18.2	NP131-008-000
10	49.7	4.2	20.8	NP131-010-000
12	53.2	4.2	21.6	NP131-012-000

NP131 Y Reducer



Tube Ø mm	B mm	D2 Ø mm	F mm	Order Code
6	36.8	4	14.5	NP131-006-004
8	39.9	6	17.7	NP131-008-006
10	49.2	8	20.3	NP131-010-008
12	52.9	10	21.3	NP131-012-010

NP132 Swivel Branch Y



Tube Ø mm	A mm	B mm	C mm	G/G mm	H mm	L mm	Order Code
4	10.0	5.5	15.1	1/8"	14	35.5	NP132-004-000
4	10.0	7.5	15.1	1/4"	17	39.0	NP132-004-001
6	10.5	5.5	16.0	1/8"	14	39.2	NP132-006-000
6	10.5	7.5	16.0	1/4"	17	42.2	NP132-006-001
8	13.4	5.5	18.1	1/8"	14	44.3	NP132-008-000
8	13.4	7.5	18.1	1/4"	17	46.8	NP132-008-001
10	15.5	7.5	20.4	1/4"	17	56.3	NP132-010-001
10	15.5	8.5	20.4	3/8"	20	57.3	NP132-010-002
12	15.5	8.5	23.2	3/8"	21	62.5	NP132-012-002
12	15.5	11.0	23.2	1/2"	24	65.5	NP132-012-003



Push-In Fittings - Plastic, Brass reinforced

Order Code	A mm	B mm	G/G mm	H mm	L mm	Tube Ø mm	Swivel Non-return Exhaust Control	NP 136C
NP136C-004-005	20.0	4.0	M5	8	28.2	4		
NP136C-004-000	22.5	5.7	1/8"	14	41.1	4		
NP136C-006-005	21.9	5.7	M5	14	28.2	6		
NP136C-006-000	23.4	5.7	1/8"	14	41.1	6		
NP136C-006-001	25.5	8.3	1/4"	17	48.8	6		
NP136C-008-000	25.6	5.7	1/8"	14	41.1	8		
NP136C-008-001	28.7	8.3	1/4"	17	48.8	8		
NP136C-008-002	29.6	13.9	3/8"	21	54.5	8		
NP136C-010-001	32.3	8.3	1/4"	17	48.8	10		
NP136C-010-002	32.9	13.9	3/8"	21	54.5	10		
NP136C-012-002	35.6	13.9	3/8"	21	54.5	12		
NP136C-012-003	36.6	11.0	1/2"	24	60.0	12		

Order Code	A mm	B mm	E mm	G mm	H mm	Tube Ø mm	Swivel Universal Elbow	NP137
NP137-004-000	7.5	23.5	22.3	1/8"	10	4		
NP137-006-000	7.5	23.5	23.1	1/8"	10	6		
NP137-006-001	9.5	26.3	25.1	1/4"	14	6		
NP137-008-000	7.5	23.5	25.6	1/8"	10	8		
NP137-008-001	9.5	26.3	28.6	1/4"	14	8		
NP137-008-002	10.5	31.9	29.6	3/8"	19	8		
NP137-010-001	9.5	26.3	32.3	1/4"	14	10		
NP137-010-002	10.5	31.9	32.9	3/8"	14	10		
NP137-012-002	10.5	31.9	35.6	3/8"	14	12		
NP137-012-003	13.5	38.6	35.6	1/2"	19	12		

Order Code	B mm	E mm	Tube Ø mm	Union Non-Return Flow Control	NP 139C
NP139C-004-000	25.7	39.5	4		
NP139C-006-000	41.9	47.6	6		
NP139C-008-000	45.6	52.6	8		
NP139C-010-000	52.3	63.1	10		
NP139C-012-000	55.0	74.2	12		

Order Code	B mm	E mm	Tube Ø mm	Union Hand-Valve, non-relieving	NP140
NP140-006-000	41.5	51.6	6		
NP140-008-000	41.5	52.6	8		
NP140-010-000	46.0	64.1	10		
NP140-012-000	46.0	64.4	12		

Order Code	A mm	B mm	d Ø mm	L mm	P Ø mm	Tube Ø mm	Socket Y	NP148
NP148-004-000	14.2	15.1	3.2	51.2	11.0	4		
NP148-006-000	15.1	16.0	3.2	54.6	13.0	6		
NP148-008-000	18.2	18.1	3.2	60.1	14.8	8		
NP148-010-000	20.8	20.4	4.2	72.9	18.4	10		
NP148-012-000	21.6	23.2	4.2	78.1	21.0	12		

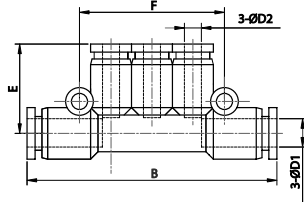
Subject to change without notice. Not liable for printing errors

Accessories

Accessories

Push-In Fittings - Plastic, Brass reinforced

NP193 Union Triple



D1 Ø mm	B mm	E mm	D2 Ø mm	Order Code
6	57.6	19.0	4	NP193-006-004
8	62.6	20.0	4	NP193-008-004
8	62.6	20.3	6	NP193-008-006
10	77.3	23.8	6	NP193-010-006
10	77.3	24.3	8	NP193-010-008